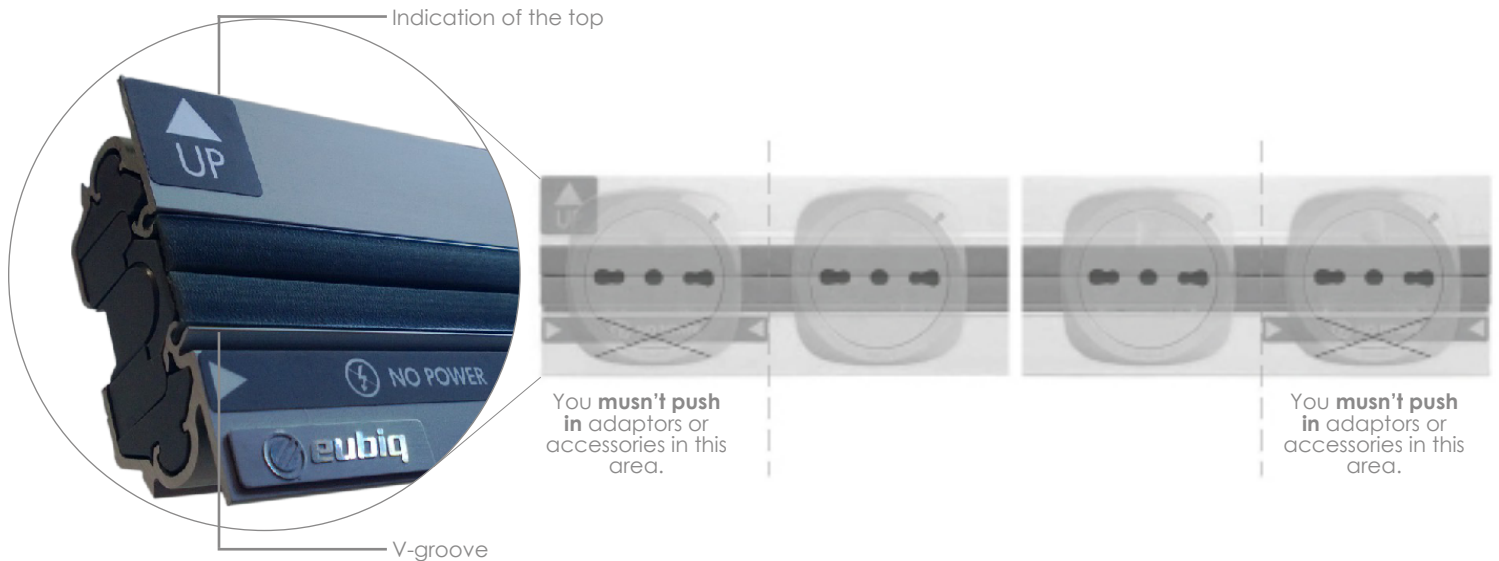


SFC4

Electrified profile for power and data.
SFC4 installation manual

Product orientation.



Warning.

-  Keep away from fire
-  Keep away from water
-  Don't use outdoor
-  It must be installed by a qualified electrician/installer

Read carefully before installation

Installation

All Power Tracks must be installed by qualified installers.

Use of the earth leakage circuit breaker (ELCB)

Is mandatory equip all electrical installations with an ELCB for protection against overloads, short circuits and leakage to ground. It can be dangerous do not follow this indication.

Installation location

All Power Tracks must be installed in locations that comply with the laws of the country in which they are installed.

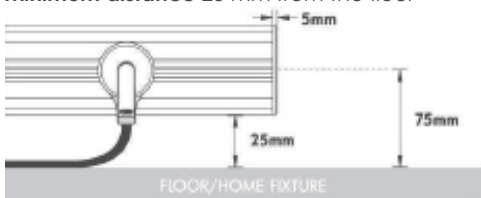
Installation Specifications

All Power Tracks must be installed on a flat surface.

Dimension and distance recommended

Refer to IMAGE.1 below for more information on the minimum distance (from the floor) request to insert adaptors and accessories.

IMAGE.1: Minimum distance for SH1 installation
 Minimum distance 25 mm from the floor



Note: the thickness of the cover is 5 mm

Technical specifications

Rated voltage:	250V c.a. single phase
Rated Current:	32Amp maximum
Frequency:	50/60 Hz
Voltage peak:	4000V c.a.
Capacity of the connection terminals (Line/Neutral/ground):	1,25 mm ² until 6 mm ²
Temperature of working ambient:	-5° until +55° (never exceed the average of 35° in 24 hours)
Maximum installation altitude:	2000 m
Degree of protection:	IP 4X
Degree of protection to dust:	2 (non-conductive dusts with temporary conductivity caused by condensation)
Material of the electrified profile and its cover:	Aluminum
Insulation material:	Polycarbonate
Overall dimension: (Width. x Depth)	62 mm x 26 mm
Conformity:	IEC EN 61534-1, IEC EN 61534-21 DNV Certification standards n° 2,4 (PSB TEST)

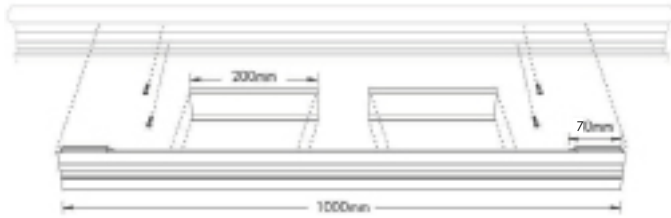
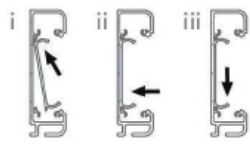
Backplate guidelines

Back plates are recommended to:
200 mm

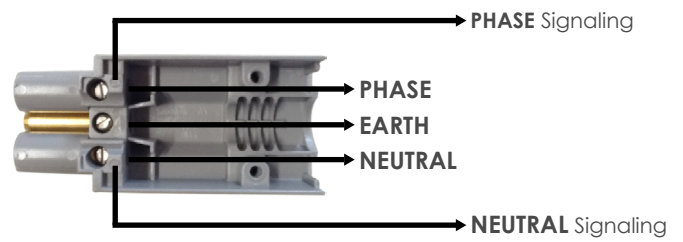
Recommended number of back plates:
1 back plate every 500 mm of track.

Minimum distance

The back plates must be joined to a minimum distance of 80 mm in the space of modular SFC4 giving way to the terminals.



Wiring

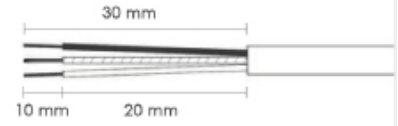


Wires positioning

Phase (brown or red)

Earth (green or green/yellow)

Neutral (blue or black)

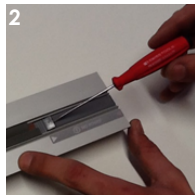


- 1) Do not install in wet spaces
- 2) If in doubt contact the manufacturer

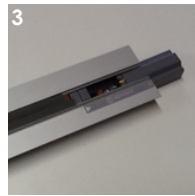
B. Installation of SFC4 modular powertrack (lateral power output)



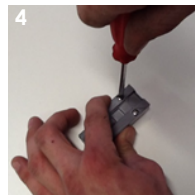
Slide off the silicon rubber.



Flip up the cover using a flat screwdriver.



Slide off the terminal.



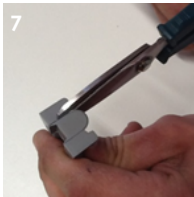
Turn the terminal and remove the two screws with a Phillips screwdriver.



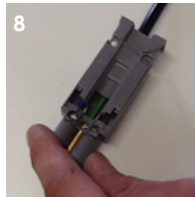
Slide off the top cover.



Terminate the wiring as indicated in the "wiring".



Cut and remove the cover for the cables.



Replace the cut cover and fix it on the terminal with the two screws removed earlier.



Slide the terminal inside the body of the Power Track until snap the clip system and replace the silicon rubbers.



Fix the backplate to the profile referring to the "Backplate Guide".



Insert the SFC4 into the profile.

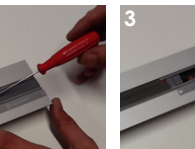


Where is needed, fix the blank cover (aluminum cap) in the profile.

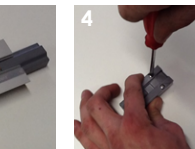
C. Installation of SFC4 modular powertrack (back power output)



Slide off silicon rubbers.



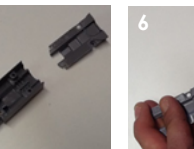
Flip up the cover using a flat screwdriver.



Slide off the terminal.



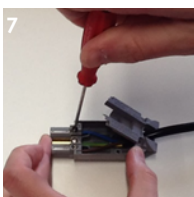
Turn the terminal and remove the two screws with a Phillips screwdriver.



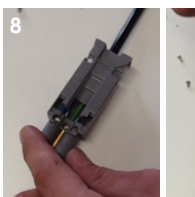
Slide off the top cover.



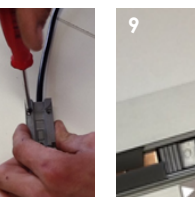
Cut and remove the cover for the cables on the back (possibly with a screwdriver push on template to facilitate the cutting).



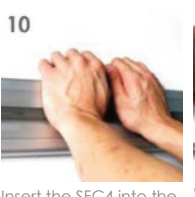
Insert the cables inside the top cover (just cut off) and terminate the wiring as indicated in the "wiring".



Replace the cut cover and fix it on the terminal with the two screws.



Slide the terminal inside the body of the Power Track until snap the clip system and replace the silicon rubbers.



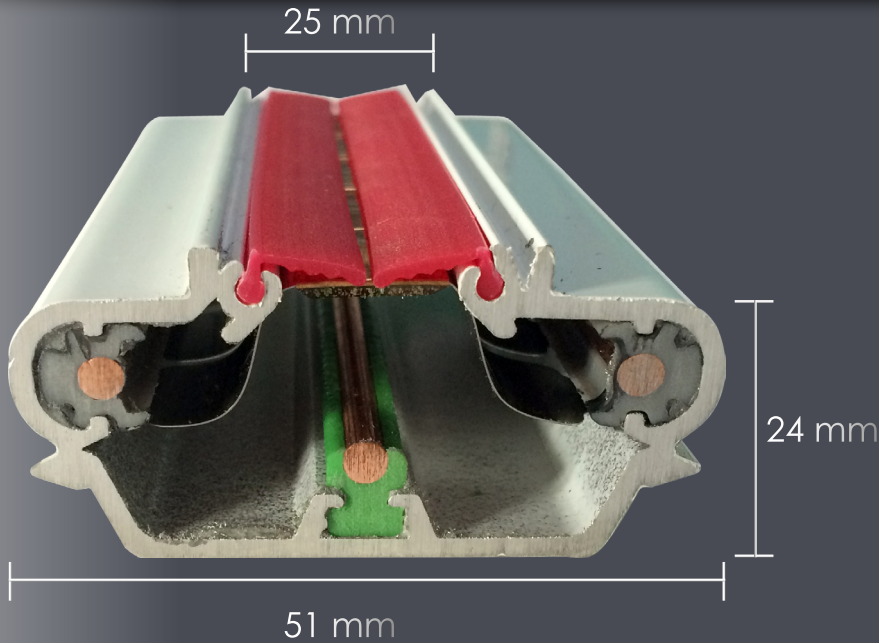
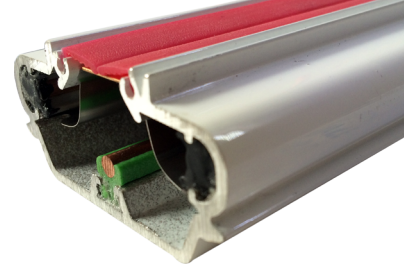
Insert the SFC4 into the profile.



Where is needed, fix the blank cover (aluminum cap) in the profile.

SFC4-INSIDE

25 mm electrified minimal profile



Inside is the new minimal built-in profile. Thanks to the neat design, it can be integrated in glass or wood platforms, plastered wall, marble, granite and stone, giving a touch of class and elegance to any environment.

Inside technical specification

Electric

Voltage: 250 V single phase

Current: 32 A maximum at 25 ° C ambient temperature

Frequency: 50/60 Hertz

Material

Inside material: Aluminum

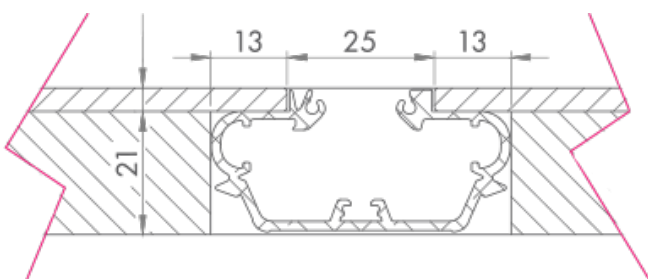
Insulation material: Polycarbonate

Dimensions and weights

Visible width: 25 mm

Built-in dimensions: 51 mm x 24 mm (width x depth)

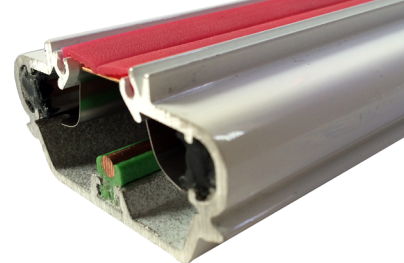
Weight: 1,1 kg (per meter)



Coating surface from 3/4 mm

SFC4-INSIDE

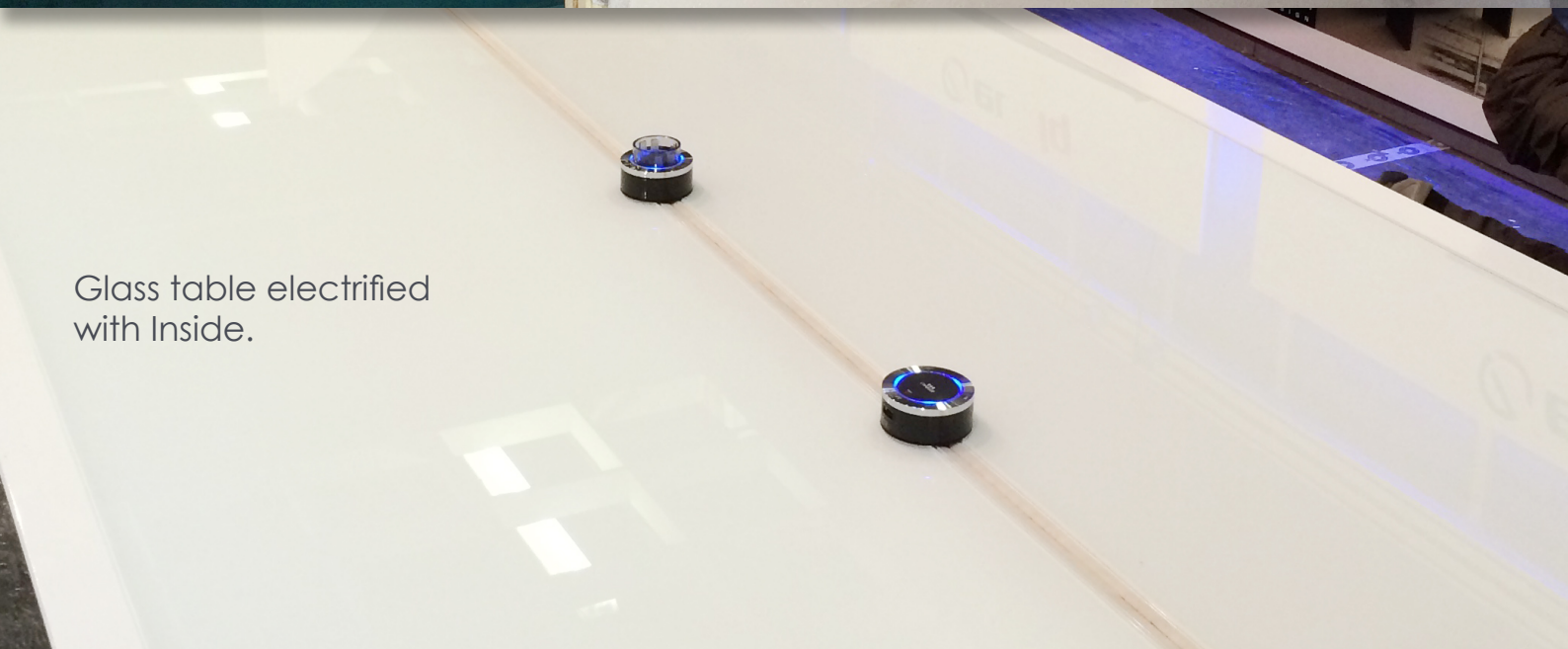
25 mm electrified minimal profile



Panel in white marble electrified with Inside profile.



Glass table electrified with Inside.



Kitchen electrified with Inside.

